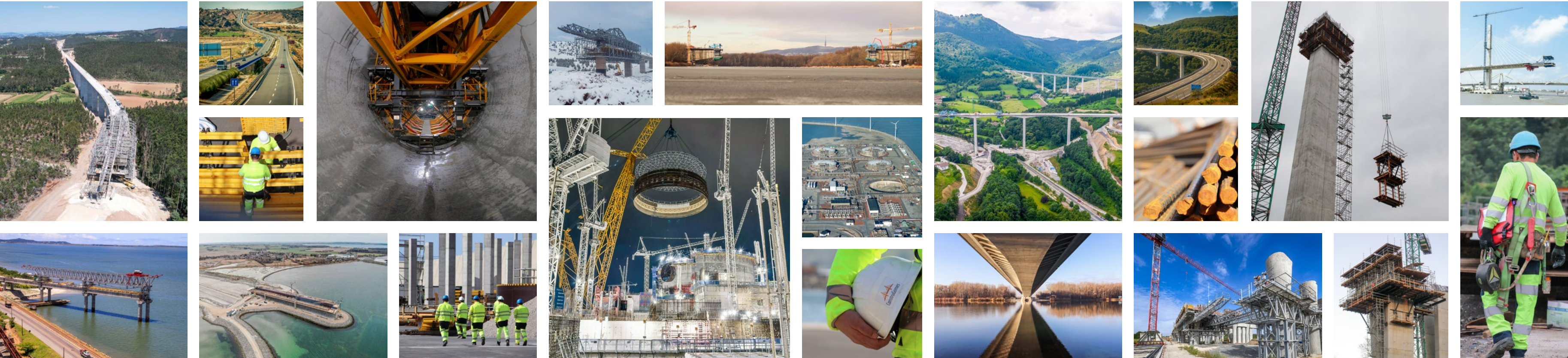


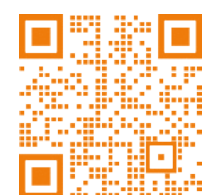
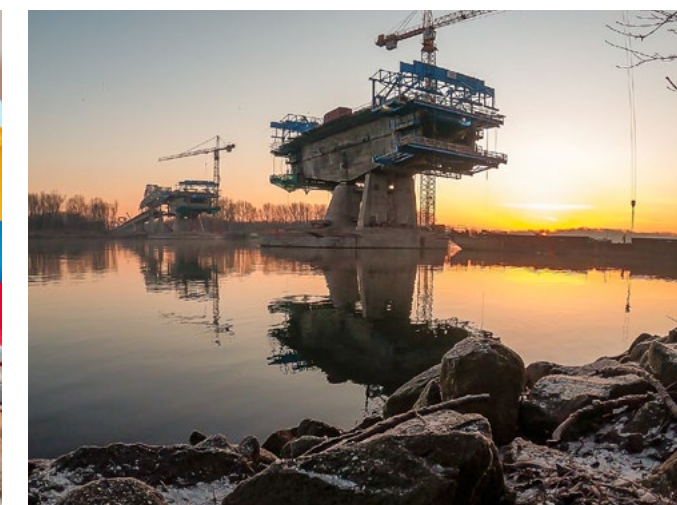
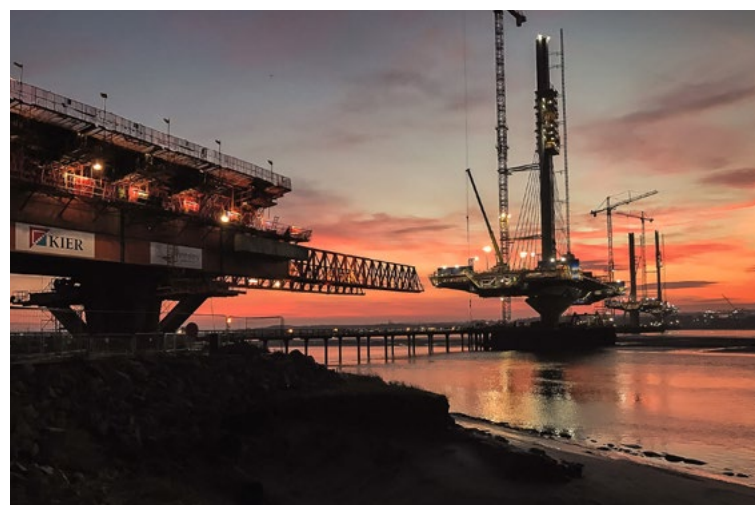
20 YEARS
BRIDGING
THE WORLD
SINCE 2004
ConstruGomes



PASSIONATE ABOUT WHAT WE DO

ConstruGomes Engenharia, a company with twenty years of experience, specializes in the construction of major infrastructure projects, particularly large bridges commonly referred to as 'works of art'. In addition to this business area, the company is also involved in the construction of tunnels, dams, and buildings.

In the construction and public works market, the company stands out from the rest due to the scope of its activity. It not only executes the projects but also plays a role in their design and conception, contributing with technical solutions aimed at optimizing the projects.



INSTITUTIONAL VIDEO



Supported by its R&D department, **ConstruGomes** continuously invests in the search for new and better technological and productive operation solutions.

From the wide range of services **ConstruGomes** offers its clients, the following technical solutions are worth mentioning: Form Travellers, Movable Scaffolding System, Wing Travellers, Climbing and Self-climbing Formwork, Heavy Propping and Tunnel formwork.

What set us apart !



MISSION

Our mission is to shape a better future.
We want to ensure the excellence of the construction services we provide.



VISION

We want to be the reference in the construction of bridges, viaducts, tunnels, and dams.



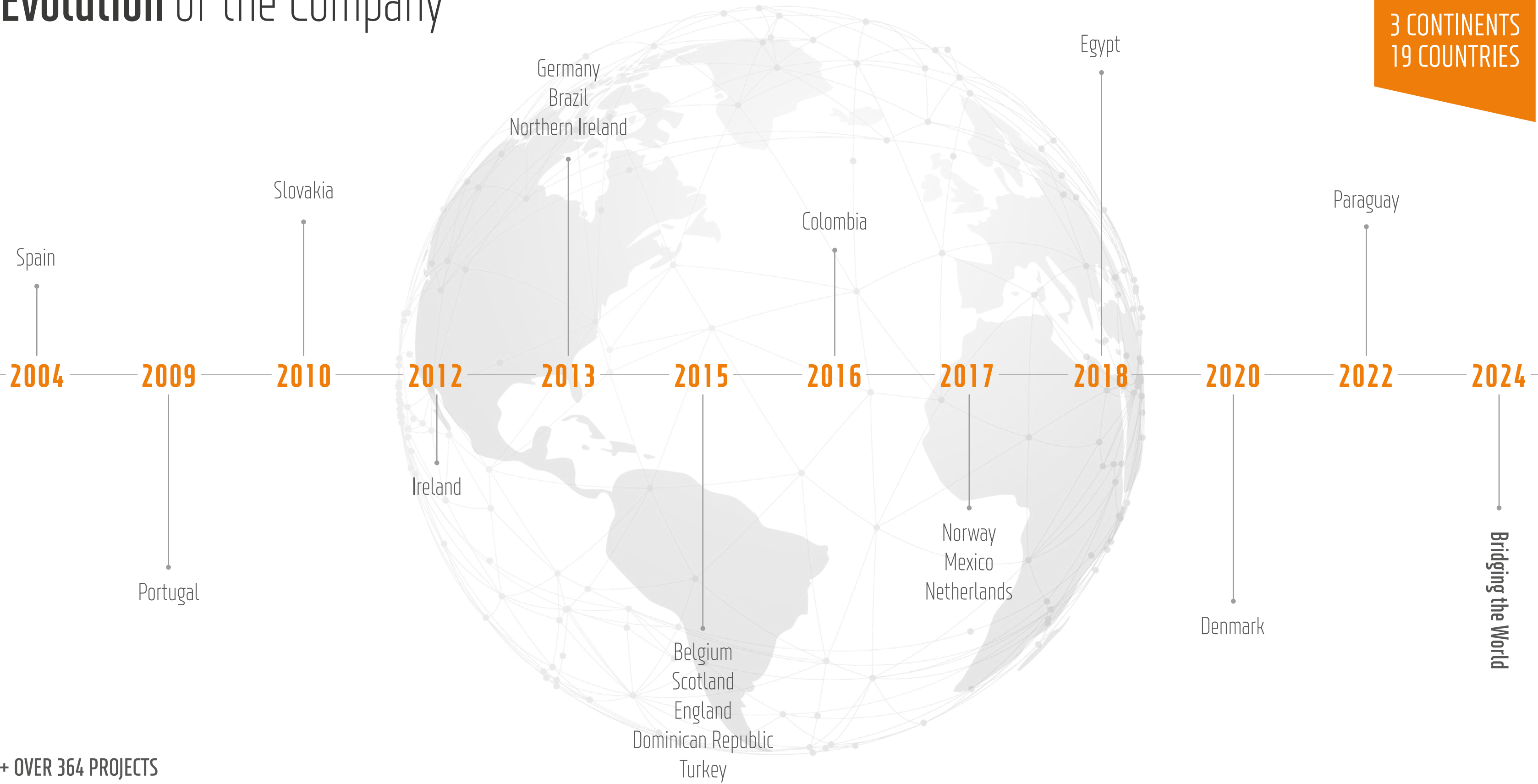
VALUES

Safety to the employees. Commitment to clients and suppliers. Quality and innovation in the services provided.



Evolution of the Company

20 YEARS
—
3 CONTINENTS
19 COUNTRIES

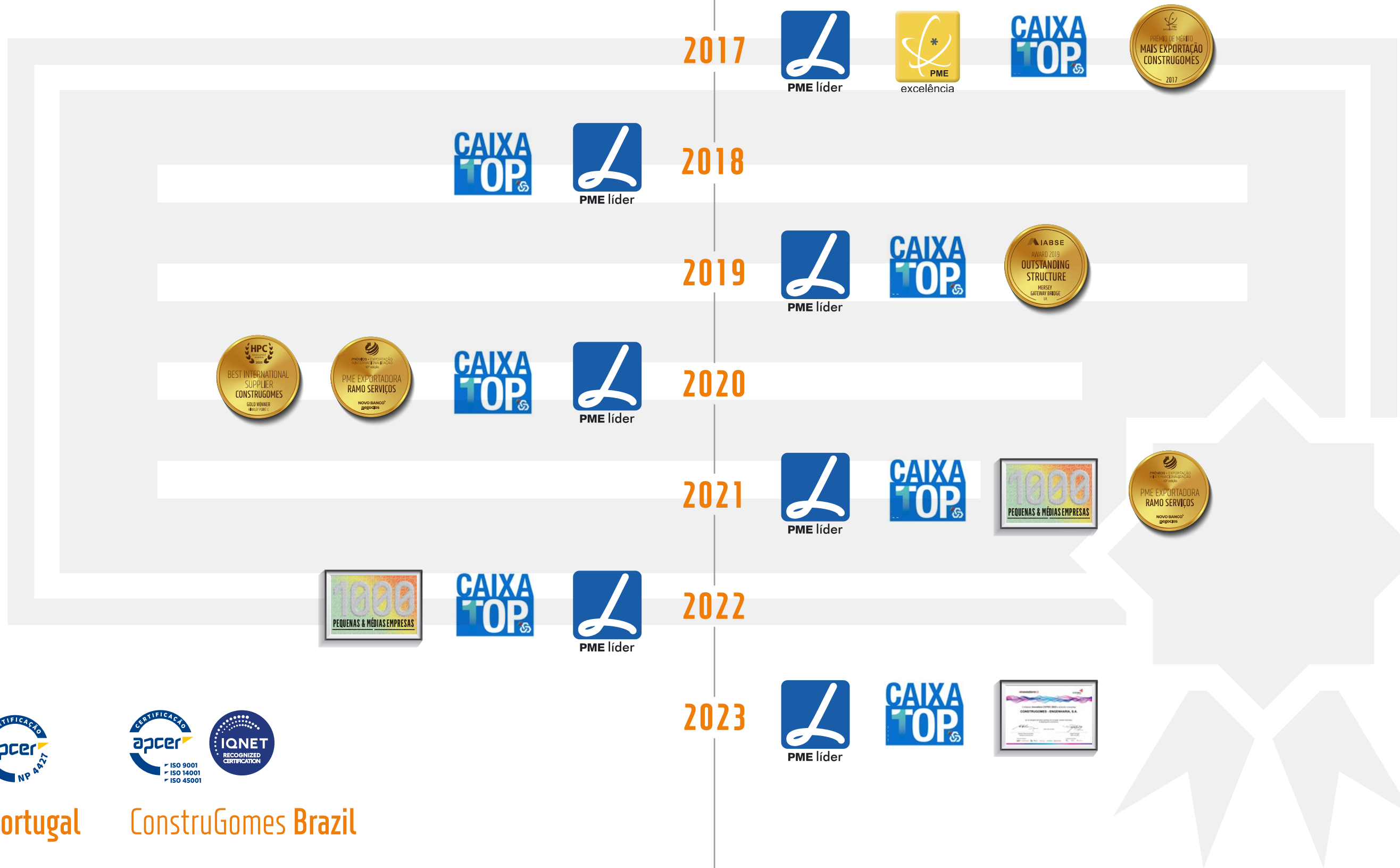


+ OVER 364 PROJECTS

Recognition

CERTIFICATES AND AWARDS

More information 



ConstruGomes Portugal



ConstruGomes Brazil

Strategic Goals

2023

2024

2025

01

Increase our presence in markets like Germany, United Kingdom and Belgium.

02

To expand our presence into the Scandinavian and Middle Eastern markets.

03

Increase the Turnover in order to reach € 50 million per year.

04

Strengthen connections with major construction companies.

05

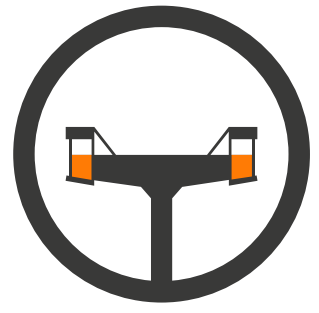
To improve the qualification of our employees through internal training programs or by hiring new technical professionals.

06

Increase the investment in our Research and Development department.

TECHNOLOGICAL SOLUTIONS





FT

FORM TRAVELLERS

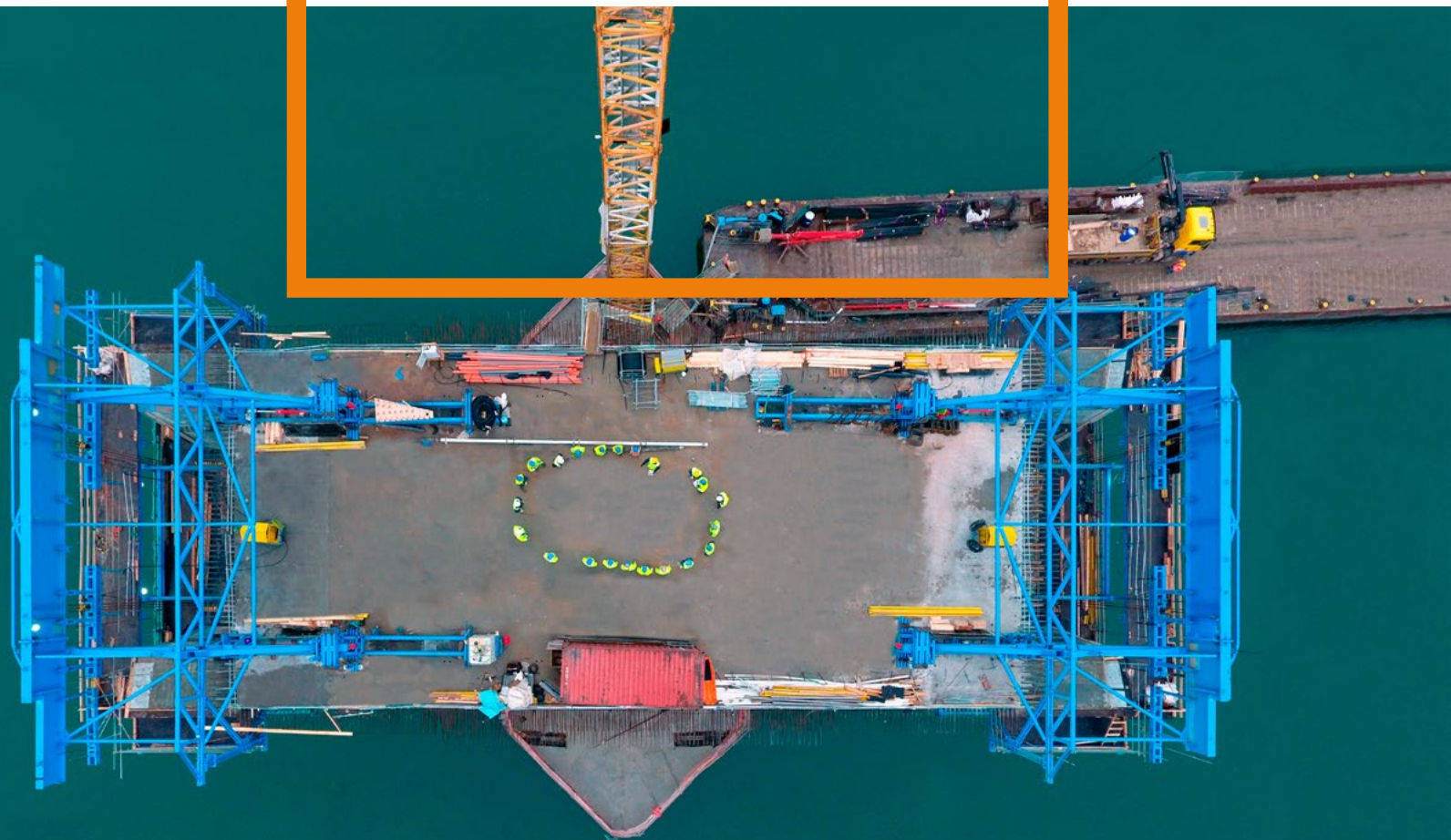
Form Travellers are used in the construction of “in situ” bridge decks, by the cantilever method. This method is essentially based in the construction of symmetrical balanced cantilevers, 3 to 6 meters, from the piers, designated by segments. After the concreting of a section, the form travellers move through rails for the concreting of the next section, leaning on the preceding segment. The formwork is suspended from the structure of the form traveller using thread bars.

TECHNOLOGY BENEFITS

- Short assembly/disassembly period;
- Concreting cycles per segment: 5 days;
- Optimização de custos/rendimentos face a outras soluções técnicas;
- Increased safety;
- Equipment versatility- easily adjustable to the deck's geometry and re-adaptable to new projects



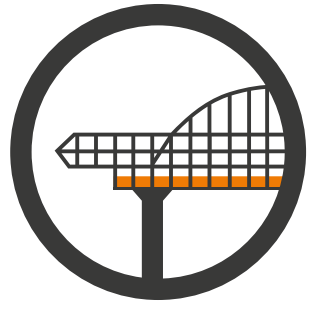
FORM TRAVELLERS



SERVICES

- Consulting and development of solutions with specific equipment;
- Bridge deck execution with any type of equipment available on the market;
- Specialised teams for assembling and operating any type of equipment;
- Possibility of equipment rental;
- Coordination and monitoring of the works;
- Turnkey solutions;
- Technical support.





MSS

MOVABLE SCAFFOLDING SYSTEMS

This method consists of supporting the MSS on the final elements (piers and abutments), being also possible to use part of the already built bridge deck as a support. After the correct positioning of the formwork, transported by the MSS, the steel reinforcement is positioned in its interior. The concrete pouring on each span can be done in more than one phase. The MSS launching is done span by span, by hydraulic mechanisms, being completely autonomous. The range of partnerships that ConstruGomes is part of, allows it to be in the forefront regarding the adoption of new technologies, being the OPS system (Organic Prestressing System) the pinnacle.

TECHNOLOGY BENEFITS

- Reduces the planning of the deck execution substantially;
- Fast concreting cycles per span: 1 to 3 weeks;
- Optimisation of cost/income when compared to other technical solutions;
- Increased safety;
- Equipment versatility- easily re-adaptable to new projects.



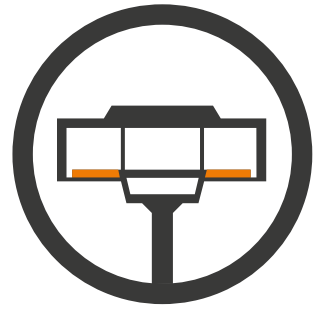
MOVABLE SCAFFOLDING SYSTEMS



SERVICES

- Technical services and skilled manpower to assemble, launch and disassemble movable scaffolding systems;
- Monitoring of pre and post assembling services, in order to achieve, through cooperation with our clients, the best quality/price solution;
- Partnerships with equipment suppliers for presentation of turnkey solutions.





WT

WING TRAVELLERS

A wing traveller works in a similar way to the MSS and the form traveller machines, acting as a movable concrete mould to complete the full deck width. Concrete is poured into both sides of the machine at the same time, enabling workers to cast sections of the outer deck on each side of the viaduct with or without struts. Once the concrete has set, hydraulic jacks push the machine forward to the next position and the cycle is repeated. Both the overhead and the underslung WT are designed for the same purpose. The underslung wing traveller system can be adapted to different types of bridges, such as cable stayed structures, leaving no obstructions to temporary or permanent cables as well as giving the opportunity for an easy back-launch to its initial installation position. For projects where reinforcement is to be prefabricated, the underslung wing traveller is the perfect choice. The external formwork for this wing traveller is supported from below, leaving no obstruction to precast prefabricated bottom slab, web and top slab reinforcement.

TECHNOLOGY BENEFITS

- Modular components that help to adapt flexibly to different geometries;
- Short periods of time to assemble / disassemble;
- Pouring cycles per segment: 4-5 days;
- Highly specialised teams for the assembly and operation of any type of equipment;
- Optimisation of costs and income when compared to other equipment.



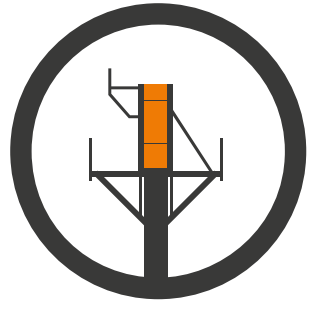
WING TRAVELLERS



SERVICES

- Consulting and development of solutions;
- Possibility of rental/sale of equipment;
- Bridge deck execution with any type of equipment available on the market;
- Turnkey solutions;
- Specialised teams for assembling and operating any type of equipment;
- Coordination and monitoring of the works;
- Technical support.





FORMWORKS

CLIMBING, SELFCLIMBING AND TRADITIONAL

Climbing formwork offers regular working cycles on high structures. It can be adapted to a wide range of requirements and is raised by supporting lifting equipment, such as cranes.

The self-climbing formwork operates similarly to the form travellers since it allows the execution of pylons and/or vertical structures by increasing segments.

TECHNOLOGY BENEFITS

- Fast concreting cycles: 1 to 3 days;
- Equipment versatility- easily re-adaptable to new projects;
- Increased safety.

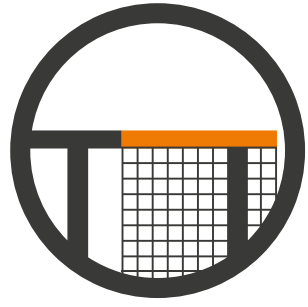


CLIMBING SELFCLIMBING TRADITIONAL FORMWORKS



SERVICES

- Operation of conventional climbing formwork systems up to 5m high;
- Self-climbing formwork with oil hydraulic systems designed by the Research & Development department;
- Design of formwork solutions without the use of connection bars between panels, which significantly reduces the concreting cycles and enables high quality finishes on concrete;
- Highly specialised teams in the operation of formwork systems existing on the market.



SCAFFOLDING

PROPPING AND SHORING SYSTEMS

The shoring system is a temporary solution which aims to support the weight of the structure while the concrete is placed and compacted. Once the concrete structure acquires the necessary strength for self-support

ConstruGomes has used heavy propped formwork up to 40m of bridge span and height. These systems are normally limited to a height of 40m because of material limitations and safety considerations.

TECHNOLOGY BENEFITS

- Equipment versatility- easily re-adaptable to new projects;
- Cost optimisation when applied to low height decks.



PROPPING AND SHORING SYSTEMS



SERVICES

- Design and Concept of propping technical solutions developed by the R&D department;
- Study of specific solutions for different lengths of spans and deck's heights;
- Teams highly specialised in the assembly of existing formwork solutions on the market;



TF

TUNNEL FORMWORK

The Tunnel Carriage is a mobile structure for the execution of tunnels. Contemplates the shoring structure with the formwork that shapes the tunnel format.

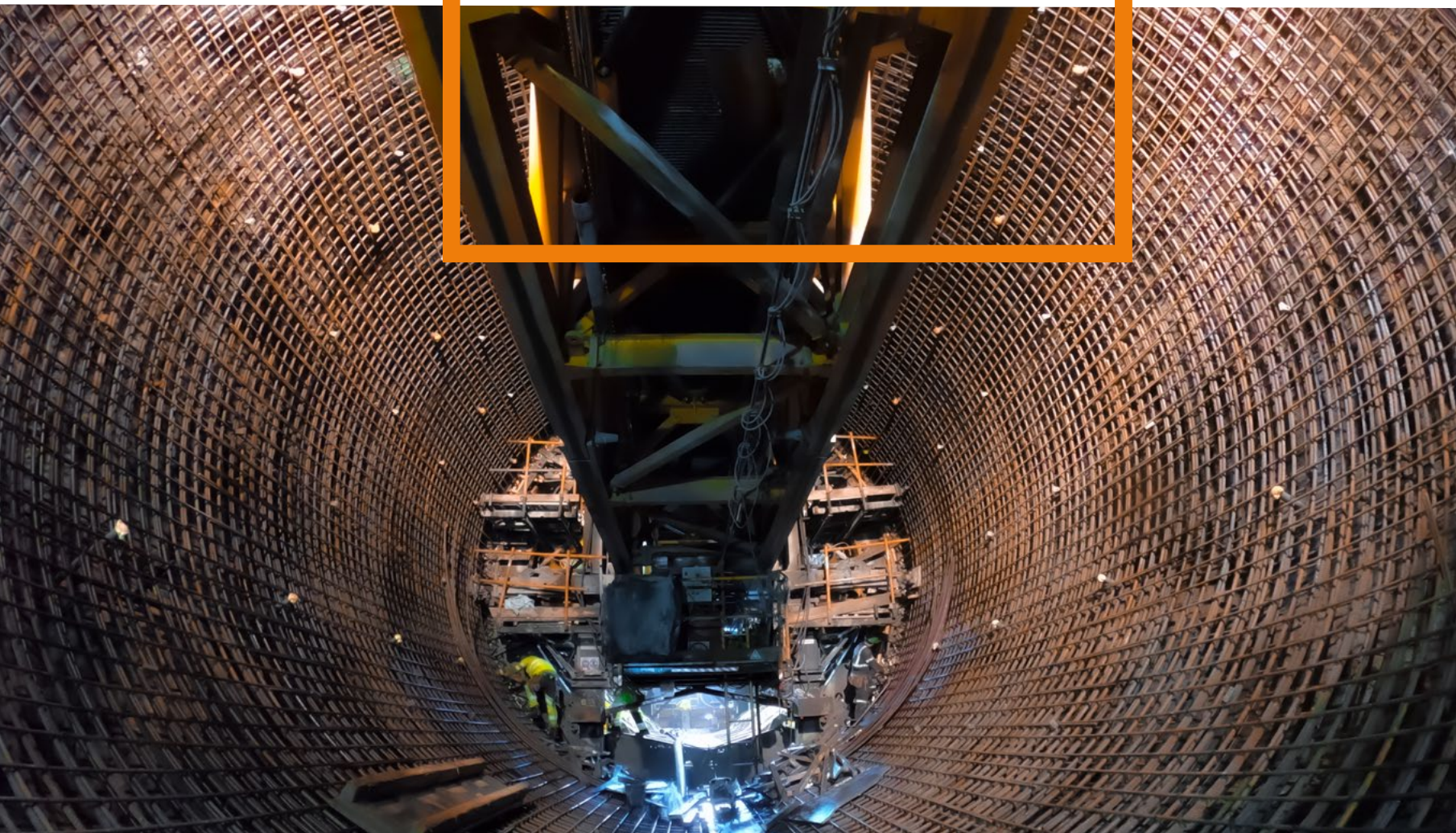
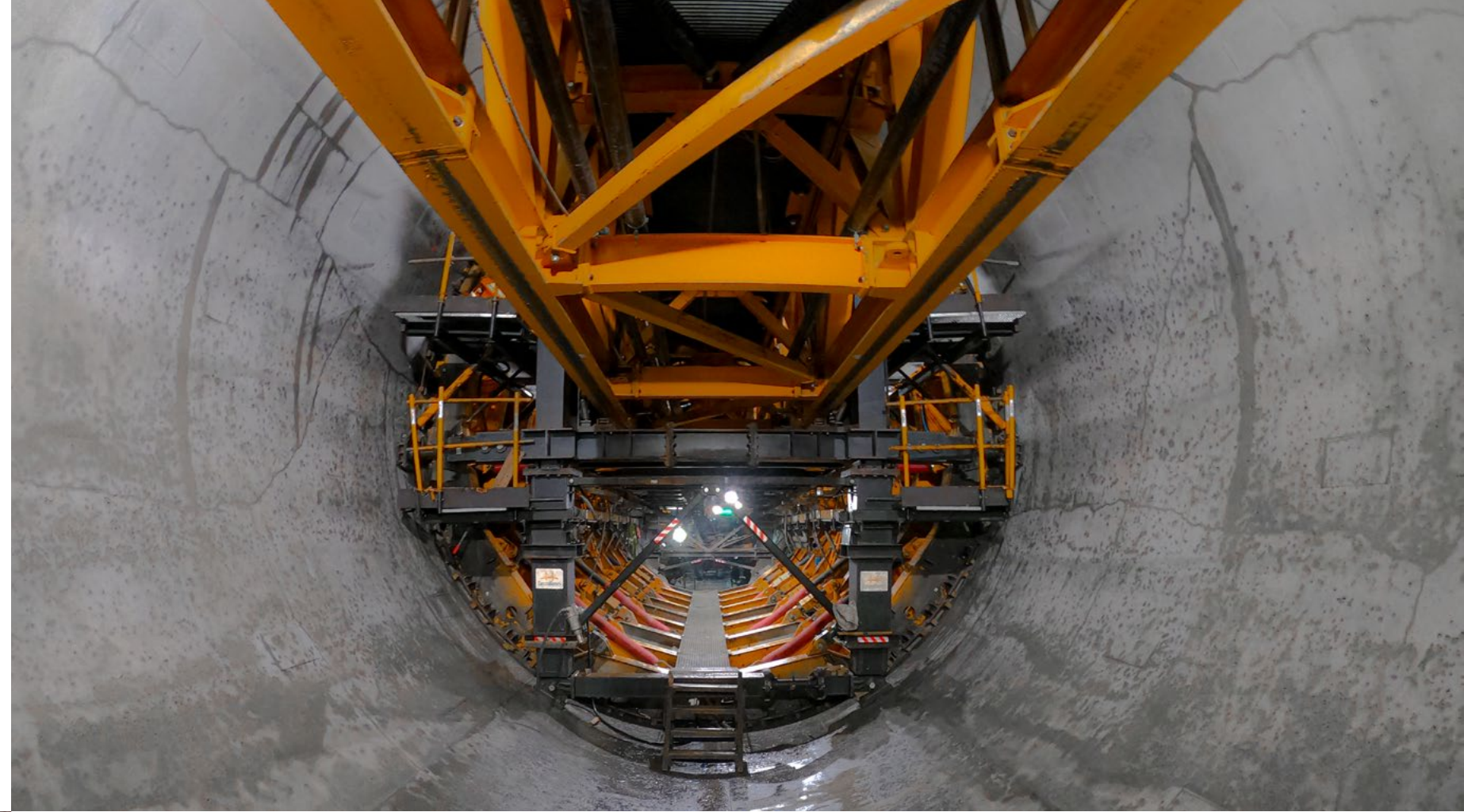
The formwork system for tunnels is composed of a lightweight mobile carriage that is used for both structure support and formwork. This is aimed at the civil engineering market, specifically at the construction of mine tunnels of up to 1km long: underground stations, tunnel connections and hydraulic galleries.

TECHNOLOGY BENEFITS

- Fast concreting cycles per segment: 1 to 3 days depending on the tunnel section;
- Equipment versatility - easily re-adaptable to new projects.



TUNNEL FORMWORK



SERVICES

- Operation of mobile structures for the execution of tunnels in open air or in mine;
- Great ratios of execution, allowing cycles of daily pouring;
- Specialised hand-labour for the current equipment solutions (with or without the use of hydraulic systems).



SERVICES 360°

VISION 360° INTEGRATED

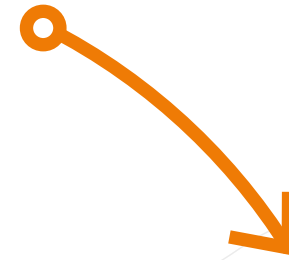
Turney solutions

We build 360° solutions, anywhere in the world.



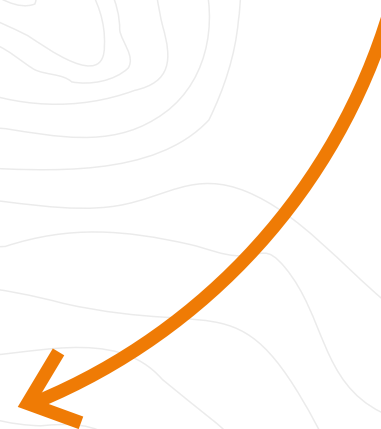
Design

We turn the client's idea into a real solution.



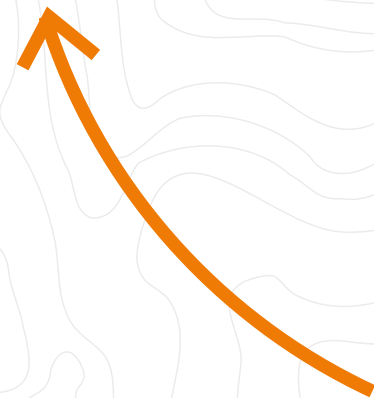
Manufacturing

We design and manufacture the technology necessary to the execution.



Supply

Our technology knows no borders. We supply the equipment to any part of the world.



Execution

We complete the project within the agreed terms and budget.

360°



ConstruGomes

At **ConstruGomes**, we don't just focus on results; we are concerned with outlining the path that must be taken to achieve the goals we set.

We all play an integral part in this journey.

Thank you.

FOLLOW US

SOCIAL MEDIA

